

LP-865 Medium-intensity Type A Aviation Obstruction Light



Application

Medium-intensity Type A Aviation Obstruction Light used in Tower Crane, Wind Turbine, High Mast, Metallurgies, Towers(Telecom, GSM, Electric), Smokestacks, High-rise Buildings and any other potentially hazardous obstructions between 105m and 150m to air traffic with a flashing white safety light.

Advantages

- Good impact protection strength, thermal stability, high transmittance.
- Built-in circuit protect LED, extremely reliable and cost saving.
- Shockproof and corrosion resistant. Working environment temperature: -40°C ~ +60°C .It can be used in very poor conditions.
- LED is special white color for Aviation Obstruction Light. Typical LED lifetime is more than 100,000 hours.
- Resistant to heavy rain or storms and corrosion.
- Free maintenance and aluminum alloy Material.
- 95% less power consumption than incandescent light.

**LIGHT UP TECHNOLOGY**

HONG KONG LIGHT UP TECHNOLOGY LIMITED

Main Parameter

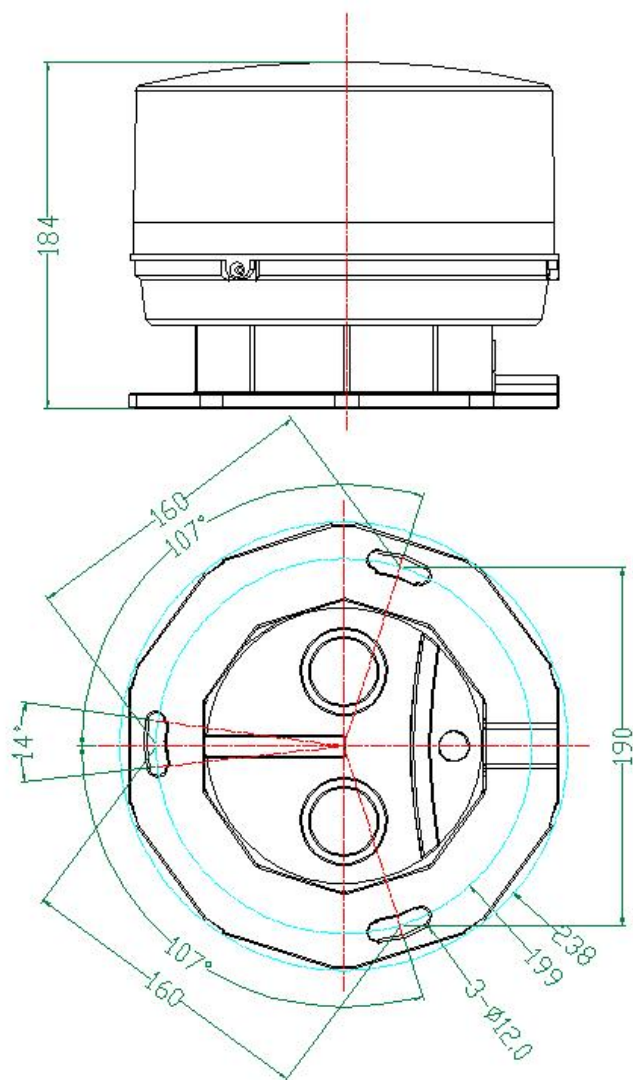
Name	Data
Model	LP-865
Standard	ICAO (Aerodromes Annex 14) Medium-intensity Type A
Light intensity	2,000cd±25% (Night),20,000cd ±25%(Daytime)
Flash rate	Flashing mode,20 to 60times/min
Light source	LED
Service life of LED	≥100,000hours
Operating voltage	AC220V (option voltage, eg. AC120V, AC110V, DC48V)
Power consumption	15W(Night), 40W(Daytime)
Overall size(mm)	238 by 238 by 184
Installation size(mm)	190 by 160 by 12
Vertical degree	3°
Horizontal degree	360°
Material	-Housing: PC -Base: die casting aluminum
Weight	3Kg
Emitting color	White
Ambient temperature	-40℃~+60℃
Wind load	80m/s
Protection standard	IP65



LIGHT UP TECHNOLOGY

HONG KONG LIGHT UP TECHNOLOGY LIMITED

Dimension Drawing





LIGHT UP TECHNOLOGY

HONG KONG LIGHT UP TECHNOLOGY LIMITED

Case

